

10.10.2020
. 10.30 >
13.00 |
WORKSHOP

"corta corta tesourinha"

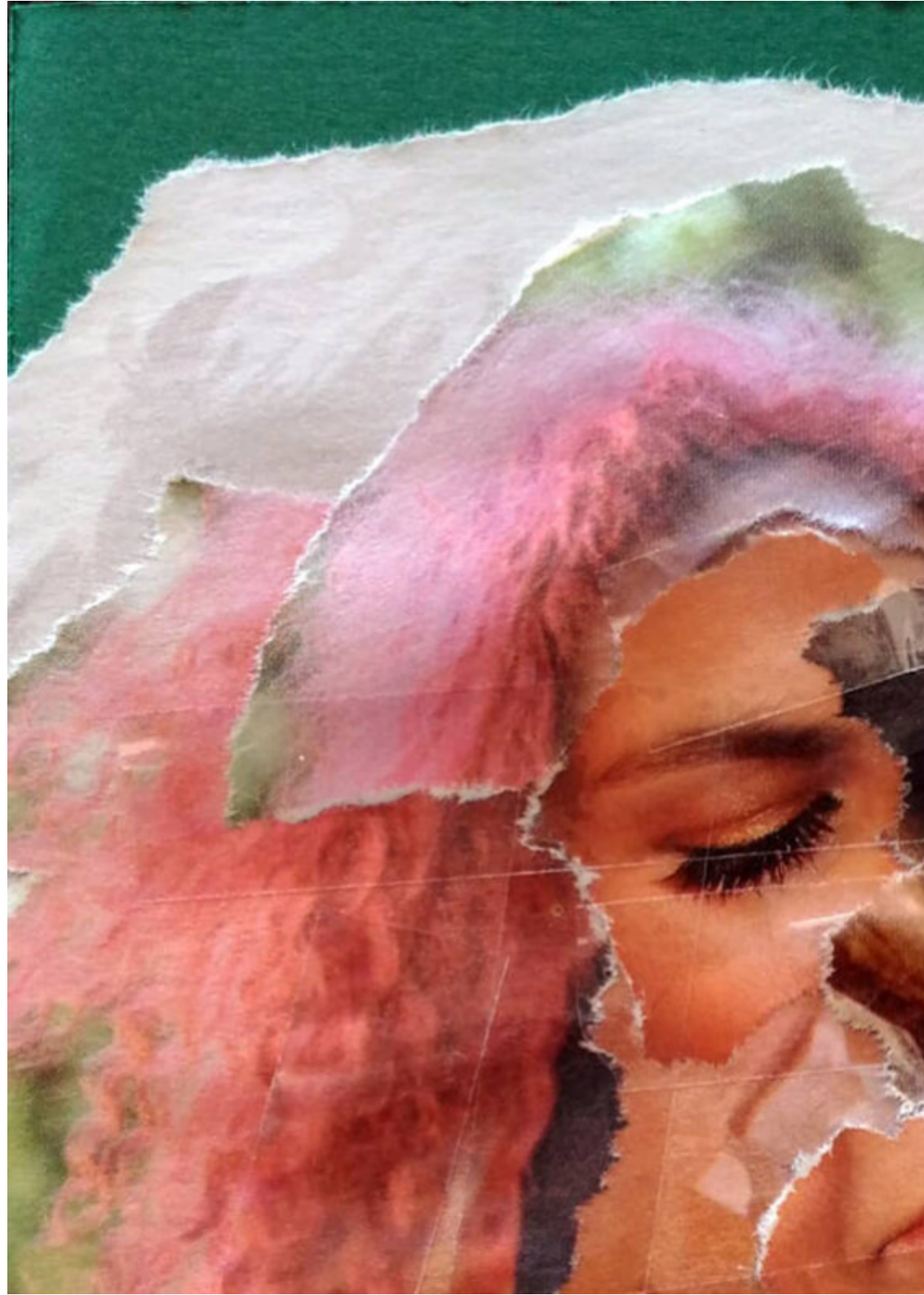
Fórum de Arte e Cultura de Espinho

required inscription

M.6 / 02h30 / 0€

collage workshop for kids and families

<https://museumunicipal.espinho.pt/pt/fale-connosco/requerimentos/formularios-de-inscricao-nas-atividades-do-servico-educativo/oficina-corta-corta-tesourinha/>
<https://aquiaqui.yzonk.com>



ABOUT

At this workshop we'll explore materials and techniques commonly used on collages and a few other out of the box concepts. We will also have time for a guided tour through the exhibition.

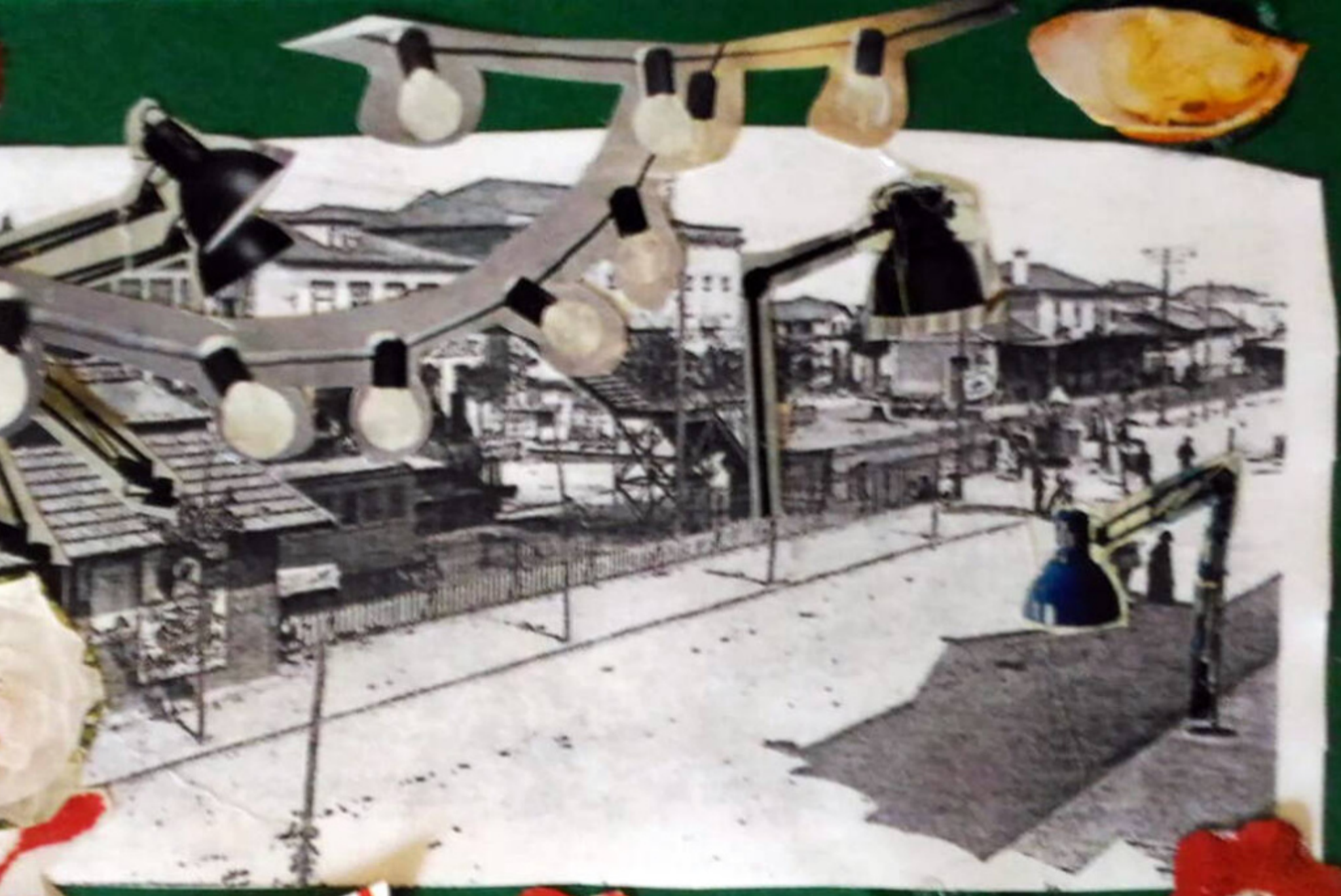
Tools and materials will be made available to the trainees. However, it is advisable to bring your own material to increase productivity. The tools and materials to be explored in the workshop are:

- . scissors, scalpels and exacto knives
- . miscellaneous papers and cartons
- . glues and self-adhesive tapes
- . magazines, newspapers and books to cut from
- . markers, pens and pencils



LUZ







Regresso às origens

ExpinHO

Era uma vez...





Carne Assada







SORRRIA!



ART

ART DIRECTOR Monsenhor enVide neFelibata

PRODUCTION YZONK.com

CO-PRODUCTION Teatro e Marionetas de Mandrágora & Escola da Marioneta

EDUCATIONAL SERVICE Serviço Educativo do Museu Municipal de Espinho

SUPPORT Município de Espinho, Museu Municipal de Espinho

FINANCIAL SUPPORT Direção-Geral das Artes & Ministério da Cultura da República Portuguesa

ENGLISH PROOFREADING Erin S. Young

THANKS Bella VF Gagarin, Berta Pereira, Clara Ribeiro, Dr.º Armando Bouçon, Filipa Mesquita, Rita Betânia

+351 938 940 122

www.MailArt.pt

mailart@mailart.pt

<https://www.instagram.com/mailart.pt/>

<http://youtube.com/@mailart>

<https://paypal.me/YZONK>

<https://yzonk.com/>